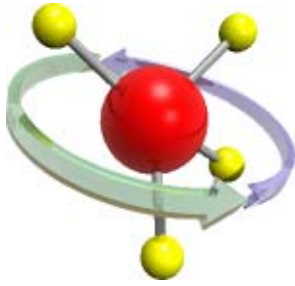




August 2010



Many customers have asked us to make CFS more open and accessible and for the ability to transfer data between CFS and other programs. In response we have developed the CFS Enterprise Edition.

The Enterprise Edition consists of two major applications that import data into and out of CFS. The first, which we call InterOp, is a program to export items from the Master File into Excel or any other spreadsheet program and back into the CFS Master File.

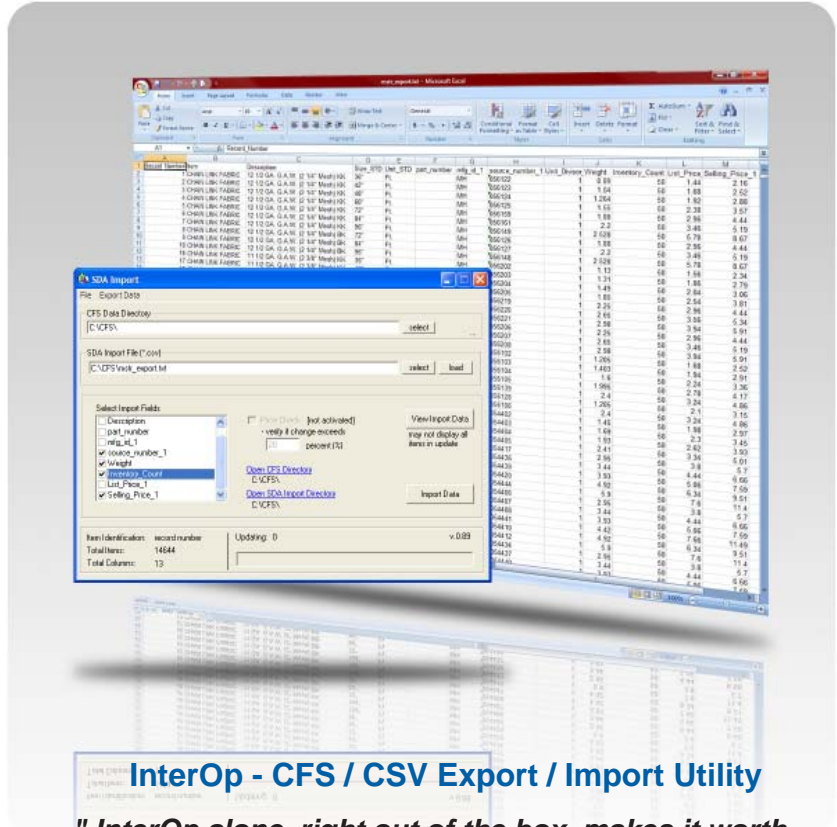
The second application, called XML Export, creates an open format XML file of Scratch Builder estimates and Cash Register invoices that contain every bit of information that CFS knows about the estimate or invoice. This data can be readily accessed by any programmer and directed to any other application.

InterOp

InterOp is a tool to export information from CFS into a standard spreadsheet (CSV) format. It exports the following CFS Master File record fields: the Record number, Description, Size, Unit, Part number, Manufacturer (Vendor) ID, Source (Vendor) part number, Unit Divisor, Weight, Inventory Count, List, Actual, In-Yard, and Retail prices for each item. You can update Part Numbers, Source Numbers, Weight, Inventory Count, List Cost or Retail Price and even Descriptions (keeping the Rules of Master File in mind) in a spreadsheet and import it back into CFS.

You can also use InterOp to export data without the intention of importing it back into CFS. Other uses include populating and updating other applications like accounting programs or web store databases with inventory items from CFS, or for analyzing your pricing structure by exporting the List Price, Actual Cost, In-Yard Cost and Retail Price for all items or groups of items to a spreadsheet format.

Computer Fencing System Enterprise Edition



InterOp - CFS / CSV Export / Import Utility

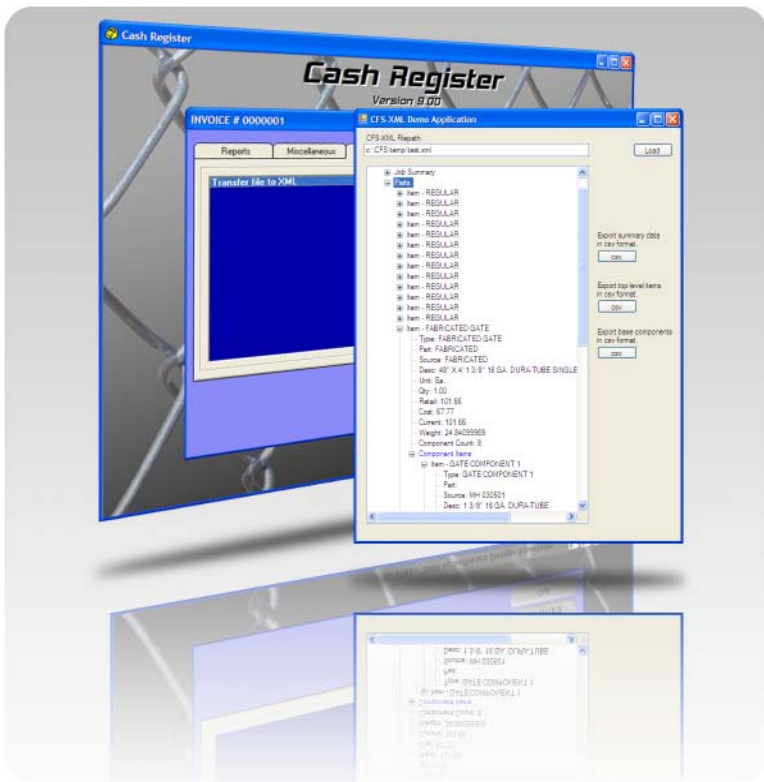
" InterOp alone, right out of the box, makes it worth becoming an Enterprise customer."

XML Export

XML Export is a CFS Enterprise Edition function to export the estimate or invoice information created in CFS. With this capability the Scratch Builder, Cash Register, and Miscellaneous Estimator programs have the ability to create a file in XML format from the Reports Menus. This file is open and accessible to any programmer. It contains every bit of information we have about a particular job, all of it in one place and ready to be accessed.

This file contains all the relevant data for the job: the Customer information, the inventory detail (even for fabricated and assembled items), the Cost, Selling Price, the Discount amount (if listed separately), Tax amounts, Labor, Freight, Specifications and a Job Description that includes the total footage and style of fence.

Other uses for the the XML Export include creating



Transfer from Scratch Builder & Cash Register programs to XML file

invoices, sales orders, estimates, and/or purchase orders in an accounting program, report sales tax totals, cost of good sold, or for creating custom reports in other programs.

Creating Apps

Custom applications can be built by using the data from the XML Export file to extend the functionality of CFS and communicate with other programs. These Apps can be launched within the normal workflow of CFS. We have created three functional open source Apps: XML Reader, Commission Assistant and Inventory Analyzer. You can use them, open them, study them and modify them anyway you like or or you can use them as examples of how to create your own Apps.

Command Line Functionality

We have given InterOp, Update Master File, and Data Miner 'Command Line' capabilities which can be used to automate a variety of functions like pricing CFS items from another application, tracking inventory, or generating sales tax reports.

Data Miner

While Data Miner is a part of all CFS Version 9 software, it works well in conjunction with InterOp and XML Export. Data Miner can scan jobs and invoices to mine for information. In addition to many pre-programmed reports (see V9 Upgrade letter), Data Miner produces CSV files with all of the information that has been saved for any range of jobs or invoices produced in CFS. You can then open this data in a

spreadsheet and extract and manipulate any portion of this information in any form you would like.

Update.EXE

This is a standard CFS program that, among other things, is used for transferring prices into CFS. By using the new Enterprise Edition command line options a programmer can make updating prices an automated process.

Terms & Conditions

These Enterprise Edition tools export CFS product data that formally was only available in a proprietary CFS format. We have many thousands of hours invested in preparing and maintaining our many fence manufacturer and wholesaler product masters. As a result we need to know that you will use this data only for your own internal purposes. We require a Confidentiality/Non-Disclosure Agreement with all of our CFS Enterprise Edition Customers.

Cost

The cost of CFS Enterprise Edition is \$750.00 per year. This includes CFS upgrades (a \$495.00 value) making the effective cost of the CFS Enterprise Edition only \$255.00 per year. If you choose not to renew your Enterprise Edition, the standard CFS functionality will remain but the Enterprise Edition tools will stop working.

Ordering

To order your CFS Enterprise Edition simply fill out and FAX back the enclosed order form. We will contact you to arrange the installation.



XML Data Flow Chart